



ENERGY RECOVERY PLATES

AIR-TO-AIR HEAT EXCHANGERS FOR BOTH RESIDENTIAL AND
COMMERCIAL APPLICATIONS



AIRXCHANGE ENERGY RECOVERY PLATES

SELECT FROM MULTIPLE PLATE SIZES AND MATERIALS TO MAXIMIZE PERFORMANCE

Airxchange's Energy Recovery Plates (ERP) provide air-to-air energy recovery at the highest level and are now available with washable media-making it the perfect solution for small and medium air volumes in residential, institutional, industrial or commercial applications.

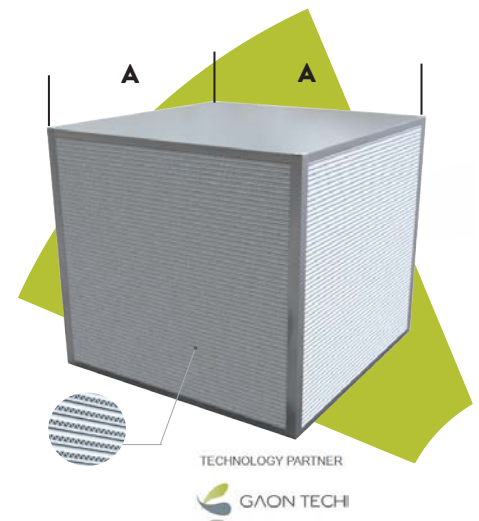
Airxchange ERP exchangers are manufactured using raw materials designed for optimal heat and moisture exchange within a total energy recovery ventilation device.

Configurations include cross-flow (enthalpy) and cross-counterflow (sensible) designs.

SEQUOIA & ACADIA SERIES

FEATURES & BENEFITS

- >> High structured plate strength-up to 5" pressure differential
- >> High efficiency enthalpy exchange
- >> Easy-to-clean, fully washable media (Acadia) now available
- >> Acadia Series - Best total performance in the industry
- >> Antibacterial coating
- >> Stackable for increased airflow
- >> No deformation under humid conditions
- >> Excellent gas barrier properties
- >> Multiple sizes up to 4,000 CFM
- >> UV resistant
- >> UL compliant



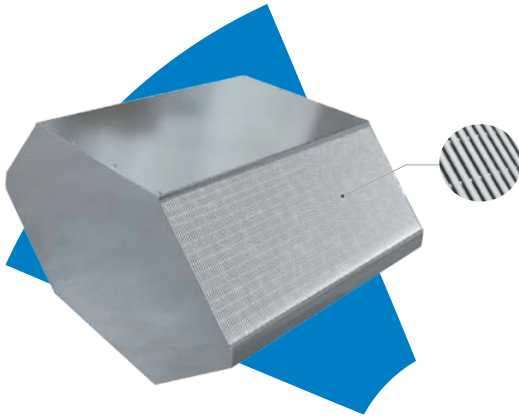
**END CAP
SIZES (A)**
275 - 1000MM

**TOTAL
EFFECTIVENESS**
50%-60%

**MAX
AIRFLOW**
50-4000 CFM

**PRESSURE
DROP**
0.3 - 1.65

Contact the Airxchange sales teams to discuss your specific project requirements.



FEATURES & BENEFITS

- >> High structured plate strength-up to 5" pressure differential
- >> High efficiency sensible exchange
- >> Excellent gas barrier properties
- >> AHRI Certified Performance
- >> No deformation under humid conditions
- >> Stackable for increased airflow
- >> UV resistant
- >> UL compliant

SENSIBLE EFFECTIVENESS
75%-85%

MAX AIRFLOW
450 CFM

PRESSURE DROP
0.1 - 1.25

AIRXWEB

Performance Selection Software

A BETTER WAY TO SELECT ENERGY RECOVERY



The latest AHRI certified software offering from Airxchange is AIRXWEB, a free, web-based performance modeling selection tool. This comprehensive software is continuously updated with the latest models and offers superior, user-friendly features. HVAC engineers can compare and select Airxchange AHRI Certified energy recovery components with greater ease and flexibility than previous software versions.

AIRXWEB ADVANTAGES

AHRI certified performance selections for your products over the entire range of operation

ELIMINATES SECURITY CONCERNS

- » No need to download large files through company firewalls

FULLY CUSTOMIZABLE

- » Allows user to prioritize selections based on key performance parameters

IMPROVED USER INTERFACE & SUBMITTALS

- » No clumsy Excel spreadsheets

- » Intuitive selection comparisons
- » Dynamic PDF format allows user to integrate performance outputs to project submittal

NO DATA LOSS

- » All projects are automatically saved and stored for future reference

REAL TIME

- » Automatically updates with latest models
- » Direct access to Airxchange product support





Airchange's 40 years of extensive experience in manufacturing energy recovery ventilation products and components has culminated in designs having outstanding performance, reliability, and maintainability. Airchange energy recovery technology provides a stable, robust product developed from the experience of more than 300,000 installations.

The company has played a pioneering role in the development of standards and codes for energy recovery ventilation technology (ERV) and remains active in their ongoing development.

Airchange's technology is now widely available in many sizes and configurations for new or retrofit applications through most HVAC equipment manufacturers.

INDUSTRIES SERVED

All comfort HVAC markets such as institutional, hospitality, commercial office, retail, medical, government, light industrial, entertainment, fitness, restaurant, and more.



85 Longwater Drive, Rockland, MA 02370

781.871.4816 • contact_us@airchange.com • airchange.com

