

POWERED BY AIRXCHANGE®
TECHNOLOGY

KEY FEATURES & BENEFITS:



DURABLE POLYMER ENERGY TRANSFER MATERIAL

Withstands harsh marine environments and will not corrode.



HYGIENIC WHEEL DESIGN The truly segmented energy recovery wheel design can be easily cleaned outside of the air handling unit. Individual segments are replaceable in minutes, saving replacement wheel costs and downtime.



MECHANICALLY BONDED DESICCANT Will not wash off or degrade during the cleaning process. This will ensure optimal performance for the life of the system.



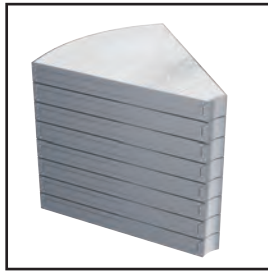
COMPACT FRONT LOADING SEGMENT DESIGN Minimizes mechanical room cabinet clearances and the service friendly design ensures low maintenance cost for life of air handling unit.



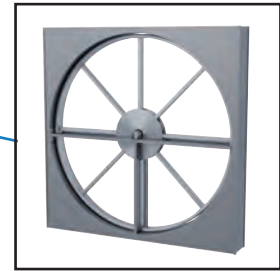
CONTINUOUS LINK BELT Eliminates need for idler or tensioner. Proven reliability and easy, low cost replacements.



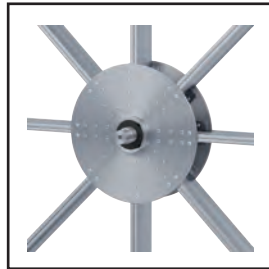
**CORROSION RESISTANT WITH
UNIQUE SEGMENTED DESIGN**



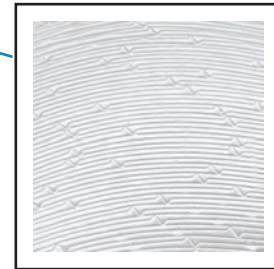
FRONT-LOADING DESIGN



**STRUCTURAL WHEEL FRAME
MAY BE MOUNTED IN
ANY ORIENTATION**



**STAINLESS STEEL
WHEEL ASSEMBLY**



**NON-CORROSIVE POLYMER
TRANSFER MEDIA**

PRODUCT OVERVIEW & OPTIONS

ELECTRICAL MOTOR OPTIONS	COASTAL MARINE GRADE MOTORS (MULTIPLE VOLTAGES AVAILABLE)
EFFECTIVENESS (%)	UP TO 85% TOTAL
AIRFLOW RANGE	500 - 30,000 CFM
ENERGY TRANSFER	SENSIBLE OR ENTHALPY
FRAME OPTIONS	G-90 GALVANIZED WITH POWDER COATING / STAINLESS STEEL
DESICCANT OPTIONS	SILICA GEL / MOLECULAR SIEVE
MATRIX OPTIONS	EFX (HIGH PERFORMANCE) OPX (STANDARD) PDX (LOW PRESSURE DROP)

**FOR DETAILED SPECIFICATIONS, DIMENSIONS
AND WEIGHTS, CONTACT AIRXCHANGE.**

CASSETTE OPTIONS

Model Series	Max. Airflow (cfm)	Frame Height (inches)	Frame Width (inches)	Frame Depth (inches) *	Weight (lbs)
ERC-30C	1,900	34	34	2.5	61
ERC-36C	3,400	40	40	4.4	118
ERC-41C	4,200	44	44	4.4	170
ERC-46C	5,200	50	50	4.4	185
ERC-52C	7,500	56	56	4.4	220
ERC-58C	9,000	63	63	6.1	320
ERC-64C	10,000	68	68	6.1	344
ERC-68C	12,000	72	72	7.1	408
ERC-74C	14,000	78	78	7.1	454
ERC-81C	17,000	85	85	7.1	580
ERC-86C	19,000	91	91	10	656
ERC-92C	21,000	96	96	10	858
ERC-99C	25,000	104	104	10	921
ERC-104C	27,000	108	108	14	984
ERC-110C	31,000	115	115	14	1100

* Does not include bearing, beam, and motor.